



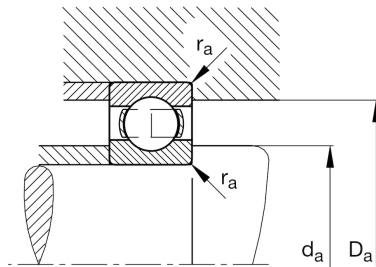
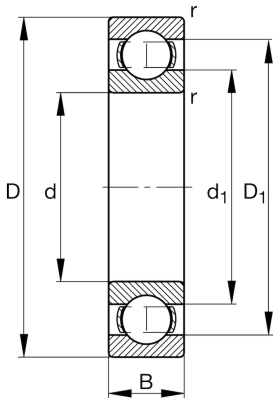
FAG

6011

Deep groove ball bearing

Schaeffler ID:
0167177400000Deep groove ball bearing 60, single row,
steel sheet metal cage

Technical information

**Main Dimensions & Performance Data**

d	55 mm	Bore diameter
D	90 mm	Outside diameter
B	18 mm	Width
C_r	30,000 N	Basic dynamic load rating, radial
C_{0r}	21,200 N	Basic static load rating, radial
C_{ur}	1,150 N	Fatigue load limit, radial
n_G	10,700 1/min	Limiting speed
n_{gr}	8,300 1/min	Reference speed
	0.365 kg	Weight

Dimensions

r_{min}	1.1 mm	Minimum chamfer dimension
D_1	78.9 mm	Shoulder diameter outer ring
d_1	66.2 mm	Shoulder diameter inner ring

Mounting dimensions

$d_{a min}$	61 mm	Minimum diameter shaft shoulder
$D_{a max}$	84 mm	Maximum diameter of housing shoulder
$r_{a max}$	1 mm	Maximum fillet radius

Calculation factors

f_0	15.3	Calculation factor
-------	------	--------------------

Temperature range

T_{min}	-30 °C	Operating temperature min.
T_{max}	120 °C	Operating temperature max.